

**Total Finished
Square Footage: 6,993 SQ FT**

Above-Grade: 5,019 SQ FT Below-Grade: 1,974 SQ FT

Plus 244 SQ FT Screened Porch on Main Level

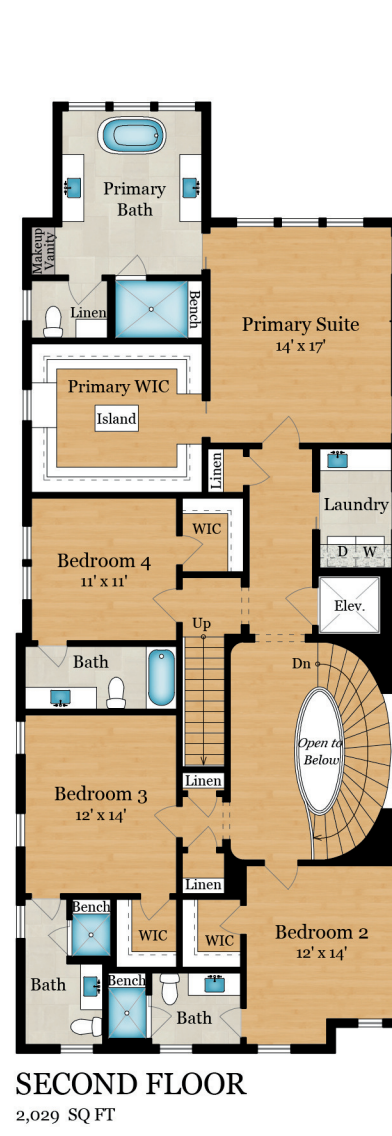
Plus 312 SQ FT Detached One-car Garage

Calculated per ANSI Standard Z765-2003.

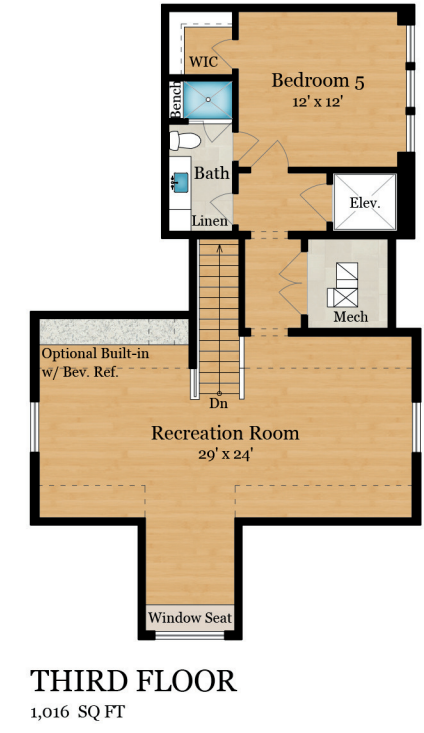
Total Finished & Unfinished Square Footage: 7,549 SQ FT

4430 LOWELL STREET, NW

WASHINGTON, DC 20016



DETACHED GARAGE
312 SQ FT



THIRD FLOOR
1,016 SQ FT